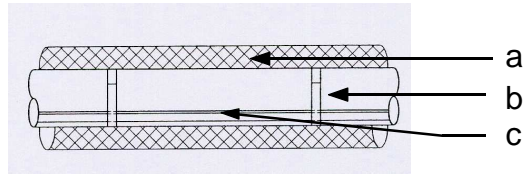


Stop Gel Cable : schéma de pose

- Traçage droit :

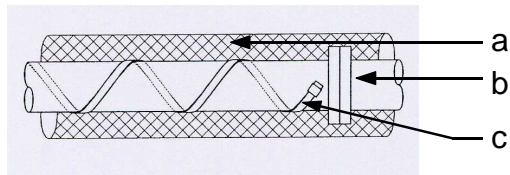


a -> Isolant

b -> Conduit

c -> Câble chauffant

- Traçage en hélice :

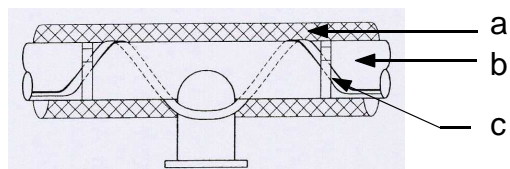


a -> Isolant

b -> Conduit

c -> Câble chauffant

- Traçage en hélice avec piquage :



a -> Isolant

b -> Conduit

c -> Câble chauffant